

UHMWPE Sheet

*Also available in Rod&Tube

UHMW (ultra high molecular weight polyethylene) is an extremely tough plastic with high abrasion and wear resistance.

The versatility of polyethylene has made it a popular plastic for countless industrial applications that require durability, low friction, and chemical resistance.



TECHNICAL DATA

Applications

- Chute, hopper, and truck bed liners
- Wear strips and guide rails
- Star wheels and idler sprockets
- High speed conveyors
- Packaging machinery parts
- Food processing machinery parts
- Bumpers, pile guards, and dock fenders

Characteristics

- Extremely tough and durable
- Low friction
- Excellent abrasion resistance
- Good chemical resistance
- Low moisture absorption
- Easy to fabricate

Physical Properties

Property	Unit	Value
Density	g/cm^3	0.96
Water Absorption 24 hrs	%	<0.01
Elongation At Break	%	754
Tensile Strength	MPa	32.8
Notched Impact Strength	KJ/m^2	60
Maximum Service Temperature	°C	85

PE-UHMW Series

Outrigger Pad

REGULAR SIZE

SIZE	LOAD CAPACITY	WEIGHT PER PAD
mm	Tonnes	KG
300 x 300 x 40	9	3.6
400 x 400 x 40	10	6.4
500 x 500 x 50	18	12.5
600 x 600 x 60	25	21.6
700 x 700 x 50	25	24.5
800 x 800 x 80	35	51.2
1000 x 1000 x 40	30	40
1000 x 1000 x 50	40	48
1000 x 1000 x 100	80	100
1200 x 1200 x 100	160	144
1500 x 1500 x 100	200	225
2000 x 1000 x 100	220	200
3000 x 1000 x 100	300	300

- * All size can be customized according to your request
- * Support logo customization
- * All regular colors support customization

Our tough no-nonsense range of outrigger pads and spreader plates provide maximum strength, durability and load distribution. Engineered for long-lasting performance, you can be confident of stable support underfoot when operating cranes, powered access platforms and mobile plant.



Made from heavy duty polyethylene, our outrigger pads offer protection against water, corrosion and splintering – a huge advancement over the more traditional wooden and steel alternatives.

Characteristics

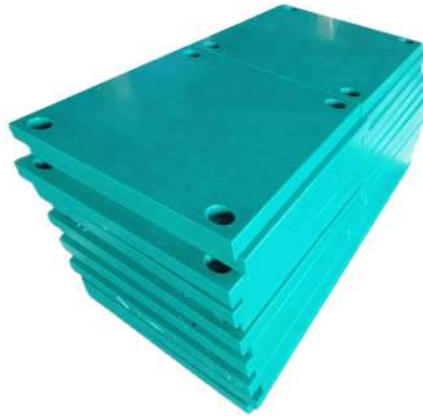
- Made from extremely high quality, high molecular weight polyethylene (HMWP)
- Lightweight and easy to handle and store with minimal effort
- Resistant from water, splintering and corrosion
- Operational temperature range: -40°F/-40°C to 180°F/82.22°C
- Special dimensions on request
- Perfect for container trucks and other heavy-load applications.



Marine Fender

Fender panels distribute reaction forces to provide low hull pressures and cope with large tidal variations.

We recommend high quality UHMW PE Pads as the best material for heavy duty impact protection. Impact resistant and very low in friction.



We are able to supply these particular fenders in a vast selection of sizes as standard.

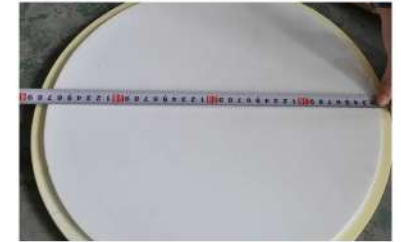
Characteristics

- Low friction coefficient
- High abrasion resistance
- UV and ozone resistant
- Reduced conductivity optional
- 100% recyclable & non-rotting
- Resists marine borers
- Easy to cut and drill



Fluidizing Plate

These superior quality fluidizing plates are made from ultra-high molecular weight polyethylene (UHMW PE), also known as a fluid bed plate for powder paint coating. The product delivers uniform air distribution for diffusing, aerating, and fluidizing materials. UHMW polyethylene can operate safely at 180°F, or 210°F for a short period of time.



Our fluidizing plates are easily installed, either side up, with a minimum of effort. Modifications can be made with regular metalworking equipment or standard hand tools. The plates can be sealed in place with standard RTV Silicones or the equivalent.

Characteristics

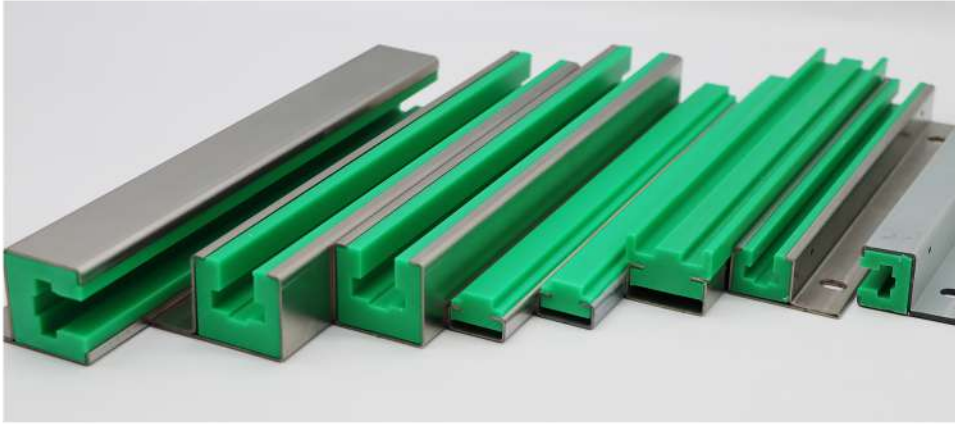
- Dehydrate quickly
- Corrosion resistant
- High compressive strength
- Impact resistance
- Anti-adhesion
- Easy to install and maintain

Applications

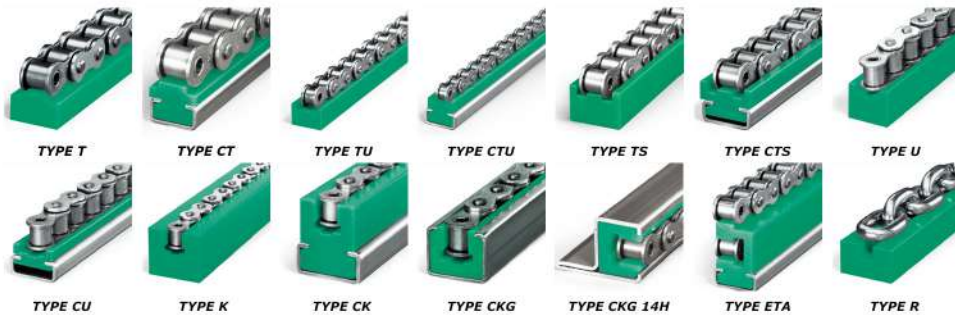
- Fluid Bed Tanks for Powder Coating
- Filter Plates
- Underdrain Media Support Plates
- Vacuum Tables
- Chemical Process Tanks

Chain Guides

Chain guides, also referred to as a chain roller guides or chain guide rails, are a type of protective guide rail for chains commonly found in industrial and mechanical applications. Chain guides are available in a wide range of types to suit different applications.



Regular Type:

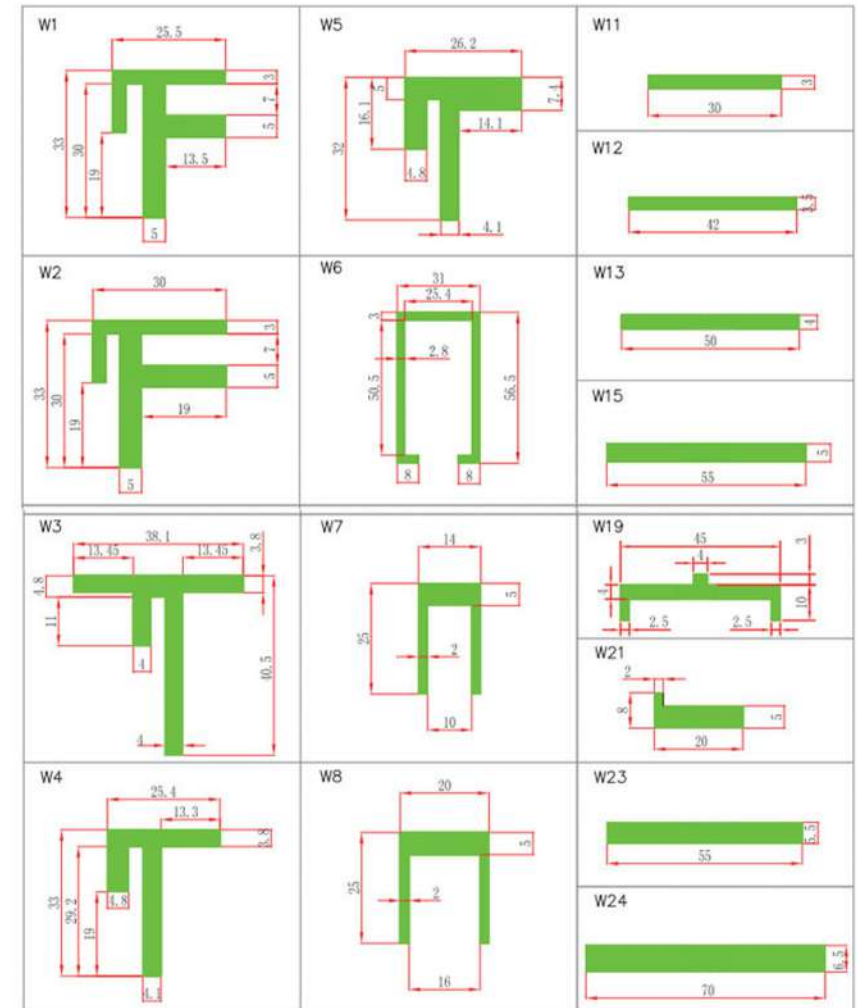


Characteristics

- Extend the life and performance of their chains
- Excellent sliding properties and very high wear resistance
- Reduce the wear and tear on conveyor chains
- FDA Compliant (Approved for contact with food)

Applications

- Packing equipment
- Car wash industry
- Dairy conveyor equipment
- Water-handling equipment
- Trucking industry
- Bottling industry



WE ALSO MANUFACTURING "SPECIAL" CHAINS GUIDE RAIL BASED ON YOUR DRAWING